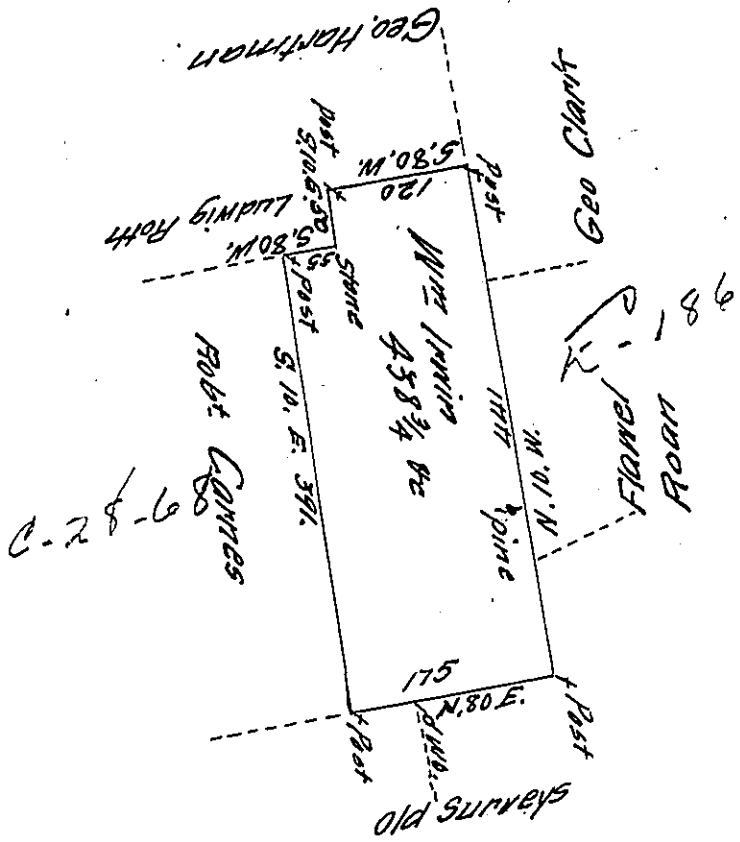


Hazle Twp.
Luzerne



A draft of a tract of land Called _____ Situate joining Lands
 SURV^d for Geo Clark in the County of Northum^d Containing four
 Hundred and thirty Eight acres $\frac{3}{4}$ & allow^d SURV^d for W^m Irwin
 the 13th day of Sep^r 1793. by virtue of a Warrant dated the 13th day
 of June 1793. by W^m Gray D.S.

To Daniel Brodhead Esq^r }
 SURV^r Gen^l

IN TESTIMONY that the above is a copy of the original remaining on file in
 the Department of Internal Affairs of Pennsylvania, made
 conformably to an Act of Assembly approved the 16th day of
 February, 1833, I have hereunto set my Hand and caused
 the Seal of said Department to be affixed at Harrisburg,
 this ninth day of February 1911.

Henry Fouca
 Secretary of Internal Affairs.

PENNSYLVANIA